

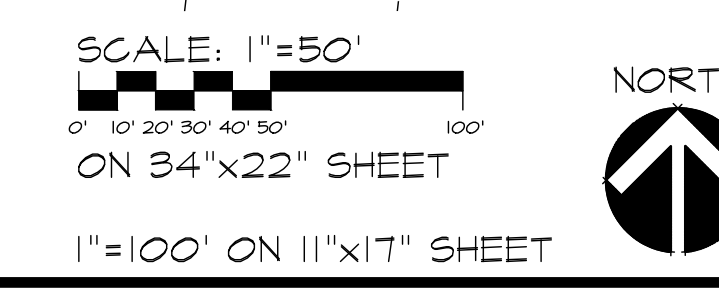
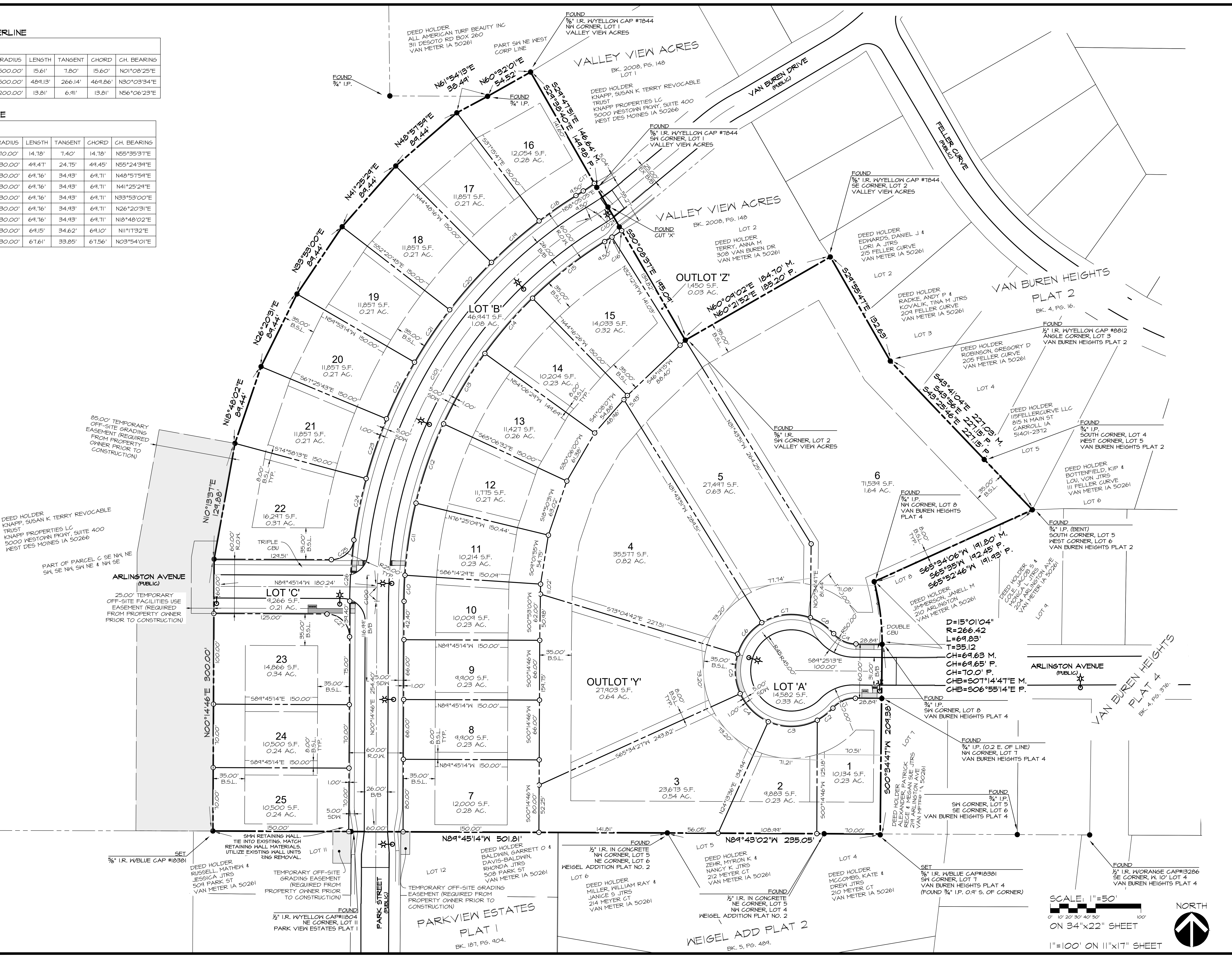
STREET CENTERLINE

CURVE	DELTA	RADIUS	LENGTH	TANGENT	CHORD	CH. BEARING
C100	1°41'18"	500.00'	15.61'	7.80'	15.60'	N01°08'25"E
C101	5°20'01"	500.00'	48.13'	26.614'	46.9.86'	N30°03'34"E
C102	3°51'23"	200.00'	13.81'	6.91'	13.81'	N56°06'23"E

LOT FRONTAGE

CURVE	DELTA	RADIUS	LENGTH	TANGENT	CHORD	CH. BEARING
C17	4°58'55"	170.00'	14.78'	7.40'	14.78'	N55°35'31"E
C18	5°20'52"	530.00'	44.47'	24.75'	44.45'	N55°24'34"E
C19	7°32'24"	530.00'	64.76'	34.43'	64.71'	N48°51'54"E
C20	7°32'24"	530.00'	64.76'	34.43'	64.71'	N41°25'24"E
C21	7°32'24"	530.00'	64.76'	34.43'	64.71'	N33°53'00"E
C22	7°32'24"	530.00'	64.76'	34.43'	64.71'	N26°20'31"E
C23	7°32'24"	530.00'	64.76'	34.43'	64.71'	N18°48'02"E
C24	7°28'31"	530.00'	64.15'	34.62'	64.10'	N11°11'32"E
C26	7°18'31"	530.00'	67.61'	33.85'	67.56'	N03°54'01"E

PLOT BY: PAUL CLAMSEN - 2022/09/15 - 41\F-FILES-8000\6666\CAD\Drawings\Construction Documents\Public Improvements\6666_CD_GEO.dwg - ANSI EXPAND D (94.00 X 22.00 INCHES) - CEC-RES TEST.C7B - ELOT SCALE = 1/1



Civil Engineering Consultants, Inc.

2400 86th Street Unit 12 Des Moines, Iowa 50322

515.276.4884 Fax: 515.276.7084 mail@cecinc.com

CEC

PUBLISH DATE: March 15, 2022

DATE OF SURVEY: 10-14-2018

DESIGNED BY: PC

DRAWN BY: MEH

HUDSON HEIGHTS PLAT 2

VAN METER, IOWA

GEOMETRIC SHEET

SHEET

05

OF 20

E6686